



Porto da
Figueira da Foz

Logistic
Solution for the
Centre Region.

www.portofigueiradafoz.pt



01 Competitive factors

Inserted in one of the most dynamic economic regions of the country, the Port of Figueira da Foz is at the service of the various industrial sectors of the Centre Region.



SHORT SEA SHIPPING PORT



CONTAINERS

Conditions for receiving new regular lines in the container segments.



TAILOR-MADE SOLUTIONS FOR YOUR BUSINESS



STORAGE

Storage capacity for covered and uncovered goods.



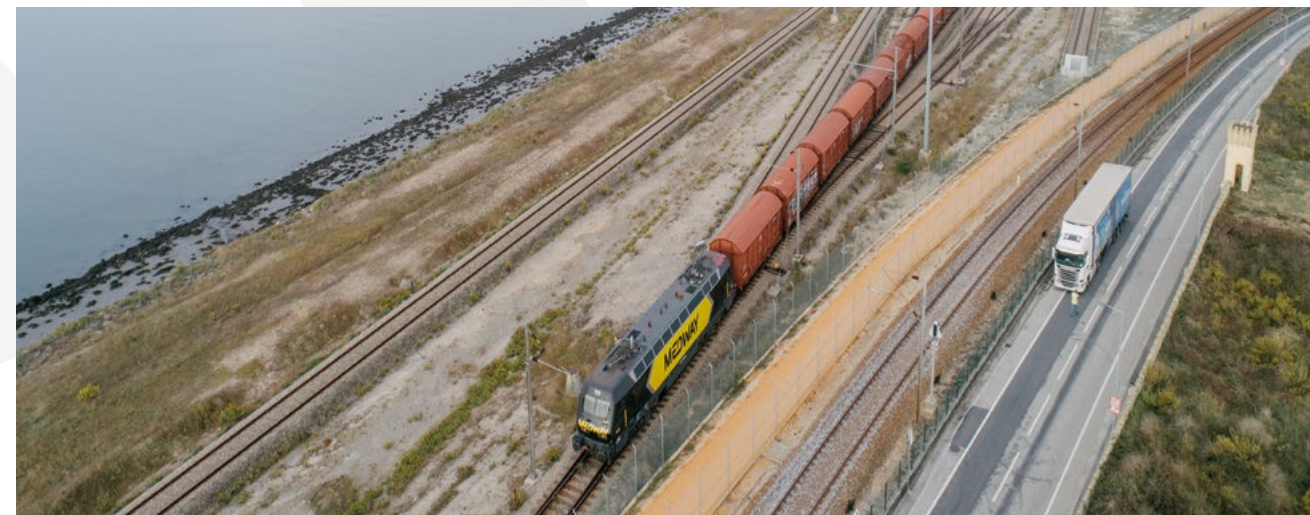
JÚL LOGISTIC SINGLE WINDOW

Process harmonisation. Optimising and synchronising multimodal flows. More agile, intelligent and reliable operations.

www.portofigueiradafoz.pt



FLEXIBLE MULTIMODAL SERVICE



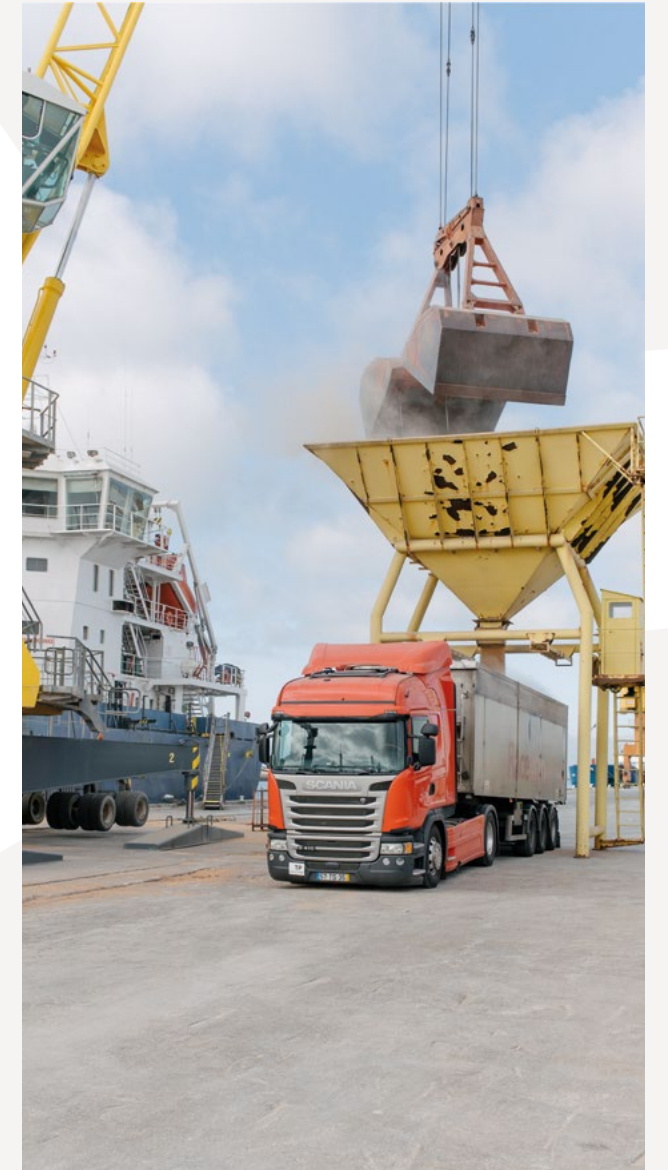
EXCELLENT ROAD-RAIL ACCESSIBILITIES



02 Business



www.portofigueiradafoz.pt



MULTIPURPOSE

The Port of Figueira da Foz offers competitive logistics services for handling a wide variety of cargo types. Break bulk cargo and bulk cargo have a prominent place at the port, which offers excellent conditions for the importing and exporting industries of the Centre Region.

CONTAINERS

Serving the cluster of the paper and forest products industry in the Centre Region, Figueira da Foz meets the needs imposed by this market, which is responsible for 1.4% of the national GVA, providing a regular line service to northern Europe.

SOLID BULK

The Port of Figueira da Foz offers excellent conditions for receiving cargo from this segment, with ample covered and uncovered areas. Given its proximity to the cement industry, the Port of Figueira da Foz offers competitive conditions for handling this type of cargo.

900 m
of quay

2.5 ha
of embankments

Ships
120 m long
6.5 m of draught

1.2 ha
of embankments

Feeder ships
up to 700 TEUs

6700 m²
of covered area
for bulk cargoes





RECREATIONAL MARINA

Figueira da Foz is a national reference in terms of sun, beach, and nautical tourism. The marina has a capacity for 350 vessels, a land surface of 32 ha and meets all the needs of those who want to visit the city by sea.

Located in the city centre, close to all tourist attractions, it has all the necessary services to support recreational boating.



CRUISE SHIPS

The Port of Figueira da Foz is in the urban area of the city, boosting the tourist potential of the Centre Region as it offers good conditions to accommodate small cruise ships. The wide variety of religious, historical and heritage tourist attractions in the Centre Region makes Figueira da Foz an opportunity for this market niche.

350 mooring places

Proximity to the historic centre



LIQUID BULKS

With 1 berth, 2 berthing dolphins and 4 storage tanks with 1,600 m³ of capacity/tank, and 2.5 ha of embankments, it is possible to carry out different types of operations in this market segment.

1600 m³ each tank

2.5 ha of embankments

LOGISTIC AREAS

The Port of Figueira da Foz has land for port expansion, totalling 7.5 ha, on the north bank, and 50 ha, on the south bank, enabling the development of industrial and logistical activities, adding value to the flow of goods that use the port and contributing to greater efficiency in supply chains with origin/destination in its hinterland.

Capacity for expansion and good road accessibility

57.5 ha of embankments

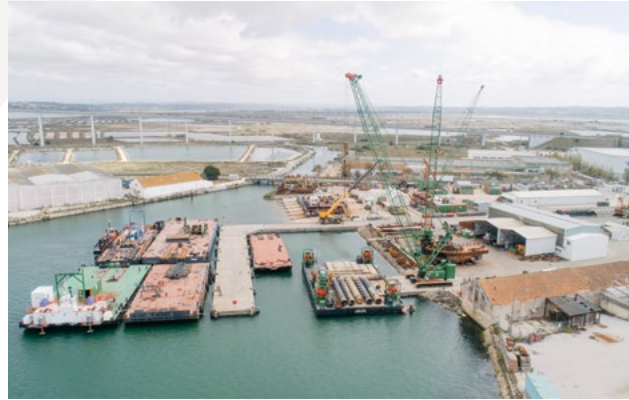




FISHING PORT

It offers infrastructures dedicated to the unloading, storing, and selling of fish for local traders.

It is equipped with 3 piers for mooring purse net, trawling and artisanal fishing vessels, as well as warehouses for storing gear.



SHIP BUILDING AND REPAIR

The availability of embankments with direct access to the water level, especially at Doca dos Bacalhoeiros, located on the south bank of the Port of Figueira da Foz, is an asset for the installation of shipyards, one of the traditional sectors of the Port of Figueira da Foz.

Infrastructures for fish marketing

Proximity to the canning industry hub



Proximity to the region's nautical market

Specialised know-how

 FIGUEIRA
DA FOZ

Logistic Solution for the Centre Region.

PORT FACILITIES

- 1 █ Administrative Area
- 2 █ Multipurpose Terminal
- 3 █ Container Terminal
- 4 █ Liquid Bulk Terminal
- 5 █ Fishing Port
- 6 █ Morraceira Industrial Zone
- 7 █ Expansion Area
- 8 █ Recreational Boating
- 9 █ Multipurpose Activities Area

LAND ACCESS

- A14
With connection to A17 / A1 / A25 / A23
- N109
- Single Entrance
Northern Port Zone
- Railway Line
With connection:
Atlantic Corridor (RTE-T)
Norte Line (PT)
Oeste Line (PT)
Beira Alta Line (ES)





**APFF - ADMINISTRAÇÃO DO PORTO
DA FIGUEIRA DA FOZ, S.A. (APFF, S.A.)**

Avenida de Espanha
3080-271 Figueira da Foz
geral.apff@portofigueiradafoz.pt
+351 233 402 910

